

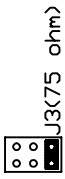


TACTILE + C1004 + CAM. EXTRA + R2620

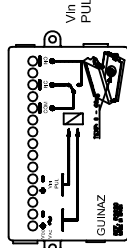
AUX KEY FUNCTION: ACTIVATE AUX 1

MONITOR
N. 1.

COAXIAL

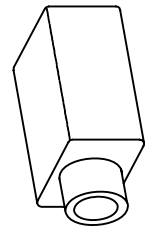
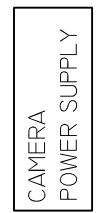
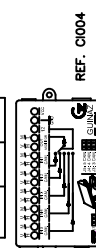


R2620



COMINO

VCC GND 12

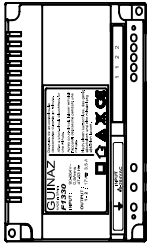
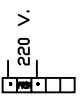


CAMERA 2:
VIDEO COMUESTO
SEÑAL PAL IVPP

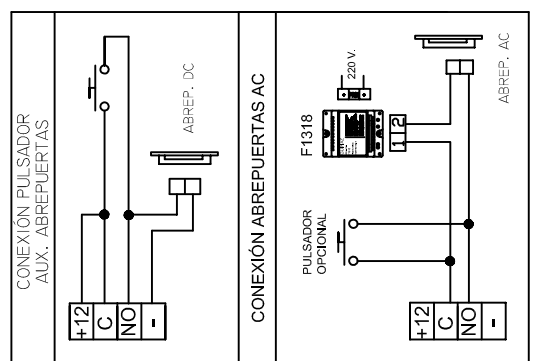
CAM2 IN V/H/M/L V/H/M/L

CAM1 IN V/H/M/L

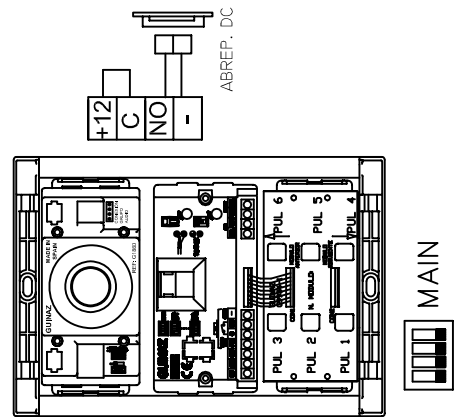
OUT V/H/M/L



FI330 / FI334



M/L V/H/V/H/M/L
IN OUT
1M 2M 3M



MAIN

ABREP. AC

ABREP. DC