

App Download and Connection

Connect Monitor to your WiFi

Choose Divert Mode 'Divert if Not Answered' or 'Divert Always'

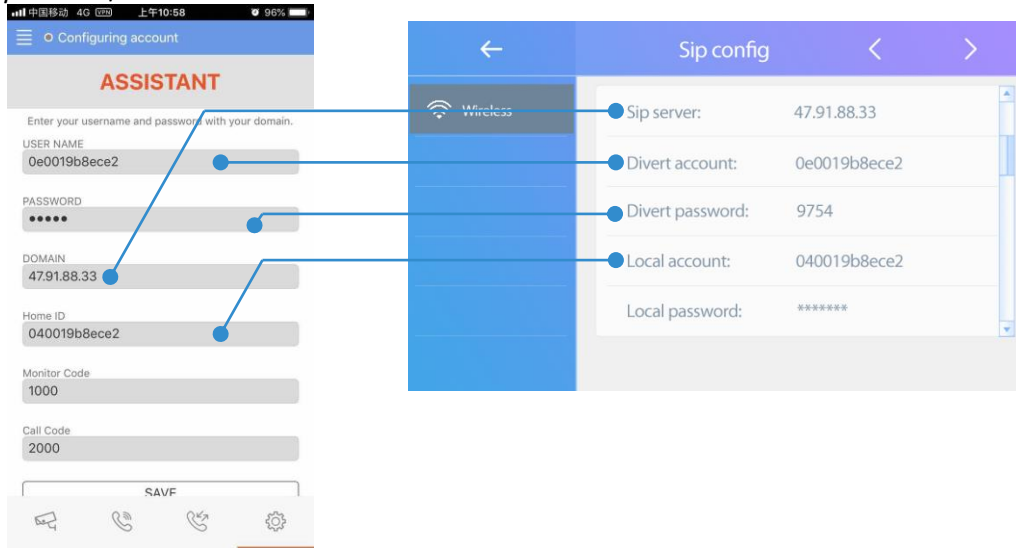
App works on both: local WiFi and 4G Mobile Network whilst away from the house



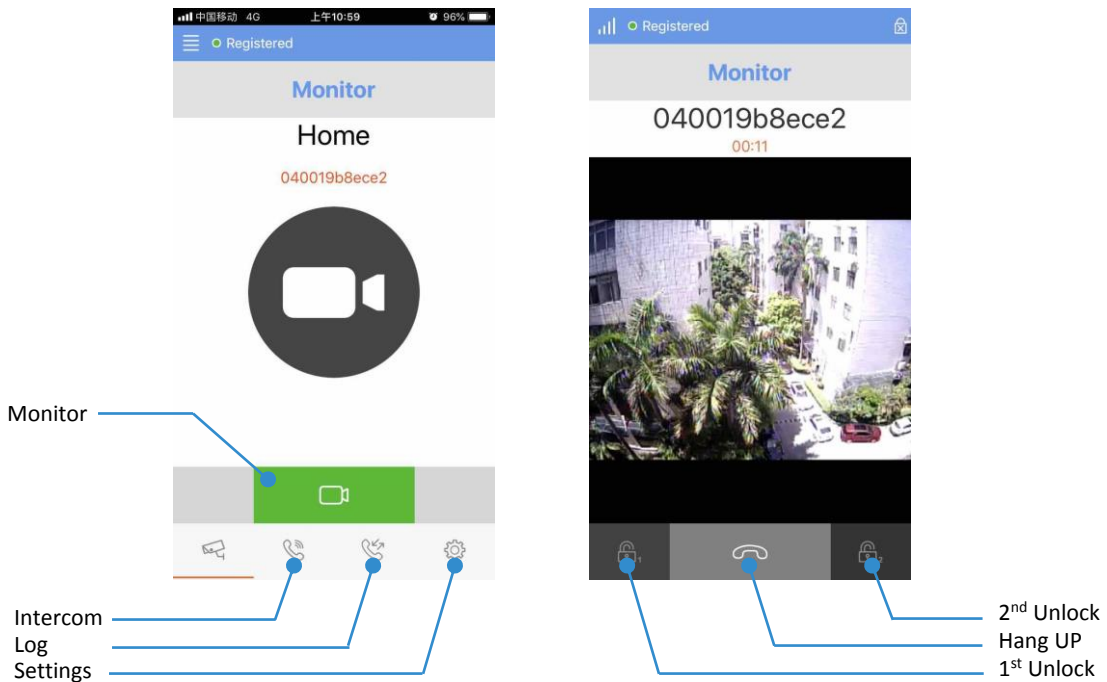
'2easy' app connection

Search '2easy' in Apple app store

Open the app and scan QR code: touch 'Server' icon to find QR code or fill in manually following information from your WiFi/IP monitor:



Functions as following:



If you have difficulties to connect to the App, please try in the App "Settings" -> "Network" -> disable "IPV6"
If you still have difficulties, find in the Monitor SIP Configuration, go to page 2, find 'Use Default' and touch that icon

