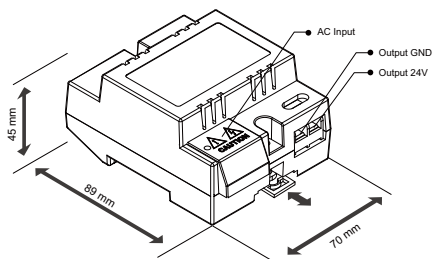


Power Combo PC4

Power Combo PC4

The power combo PC4 is designed for DT system to provide power supply for small house system

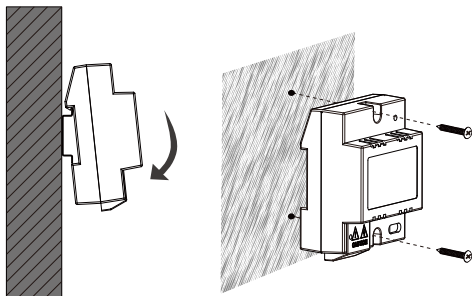
- 24Vdc output(adjustable)
- Wide range input voltage
- Direct wall or DIN bar mounting
- Support 1-2 video monitors
- Support only one door station



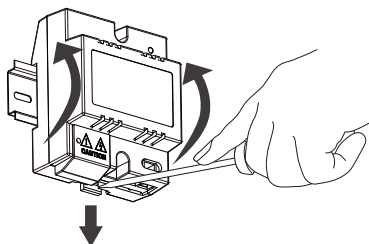
Mounting

DIN bar mounting

Direct wall mounting

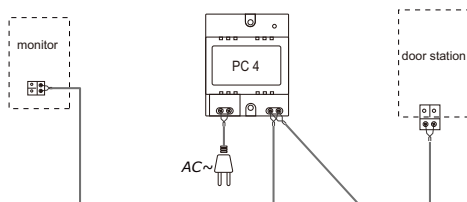


Take off the unit from DIN bar



Wiring

Please refer to the following diagram.



Specification

Input Voltage:	100~240Vac
Input Frequency:	50~60 Hz
Rated Output Voltage:	DC 24V±2V
Rated Output Current:	0.75A
Working Temperature:	-15°C~55°C
Wiring:	2 wires (non-polarity)
Gross Weight:	0.17kg
Dimension:	89(H)×70(W)×45(D)mm