

# IP-MR18

Door Station



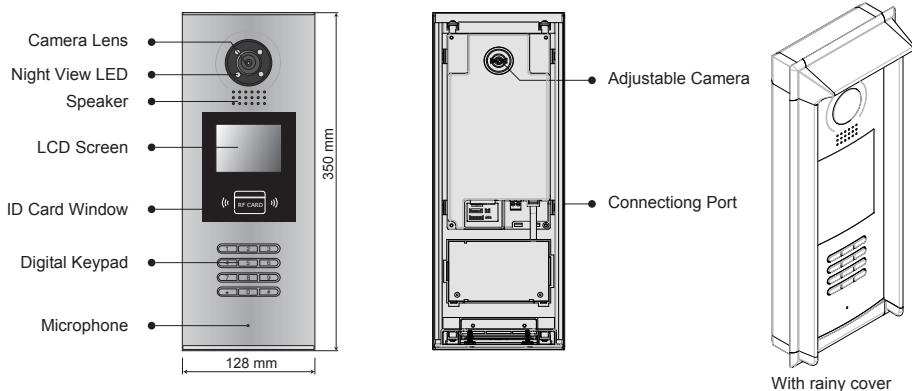
## User Manual

Please read this manual carefully before using the product you purchase, and keep it well for future use. We reserve the right to modify the specification in this manual at any time without notice.

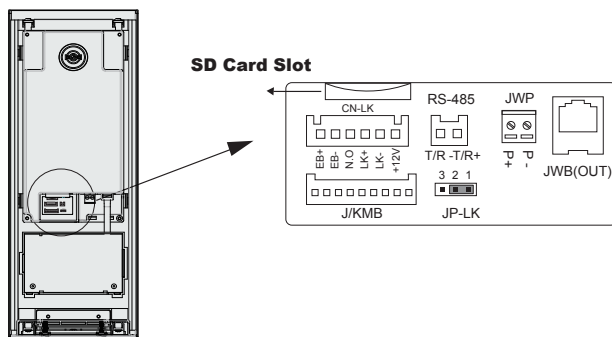
# Contents

1. Parts and Functions.....	1
2. Terminal Descriptions .....	1
3. Door Station Mounting.....	2
4. Basic System Connection .....	3
5. Door Lock Connections .....	4
6. Door Station Configurations .....	6
7. Language and UI updating .....	11
8. Specification .....	12

# 1.Parts and Functions

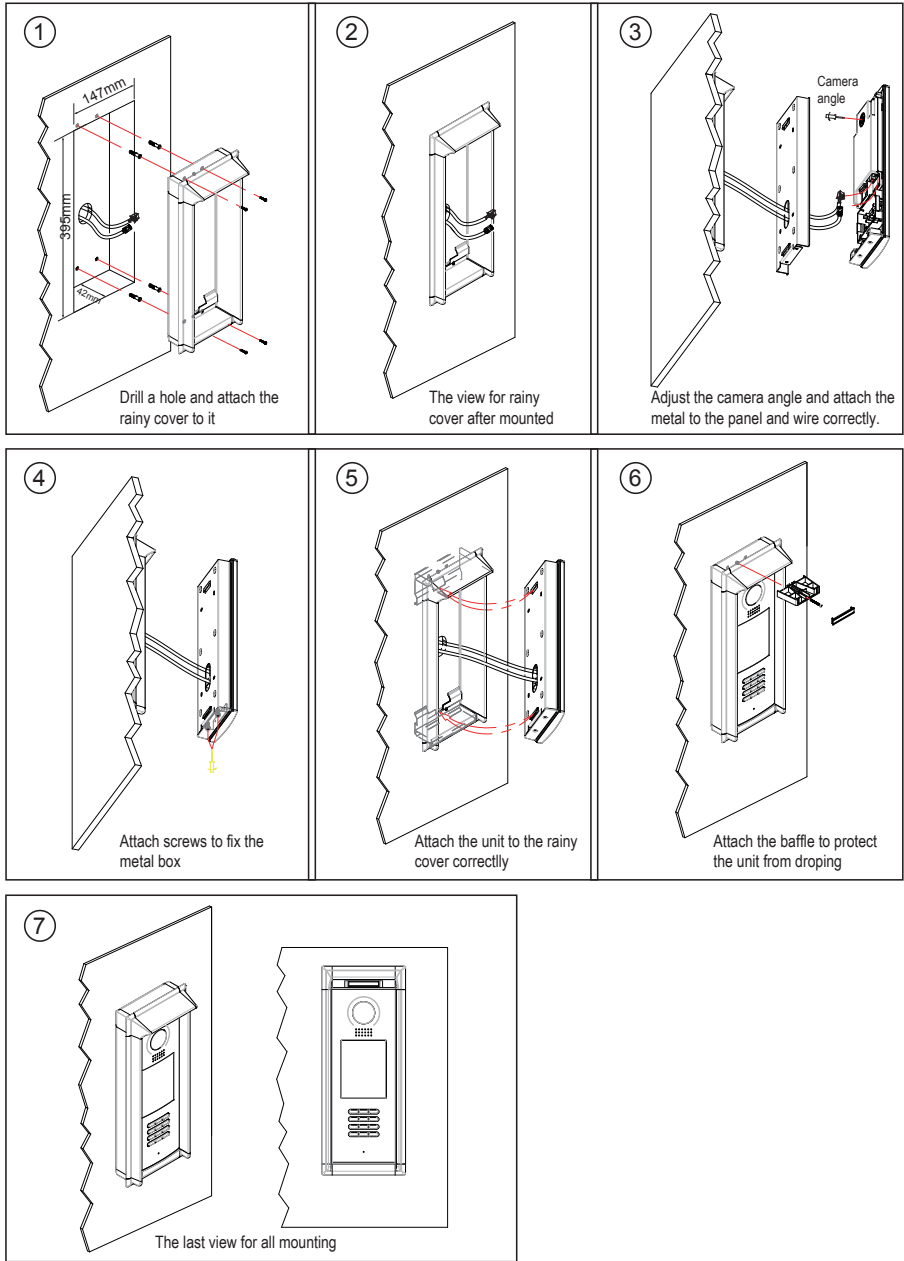


## 2. Terminal Descriptions



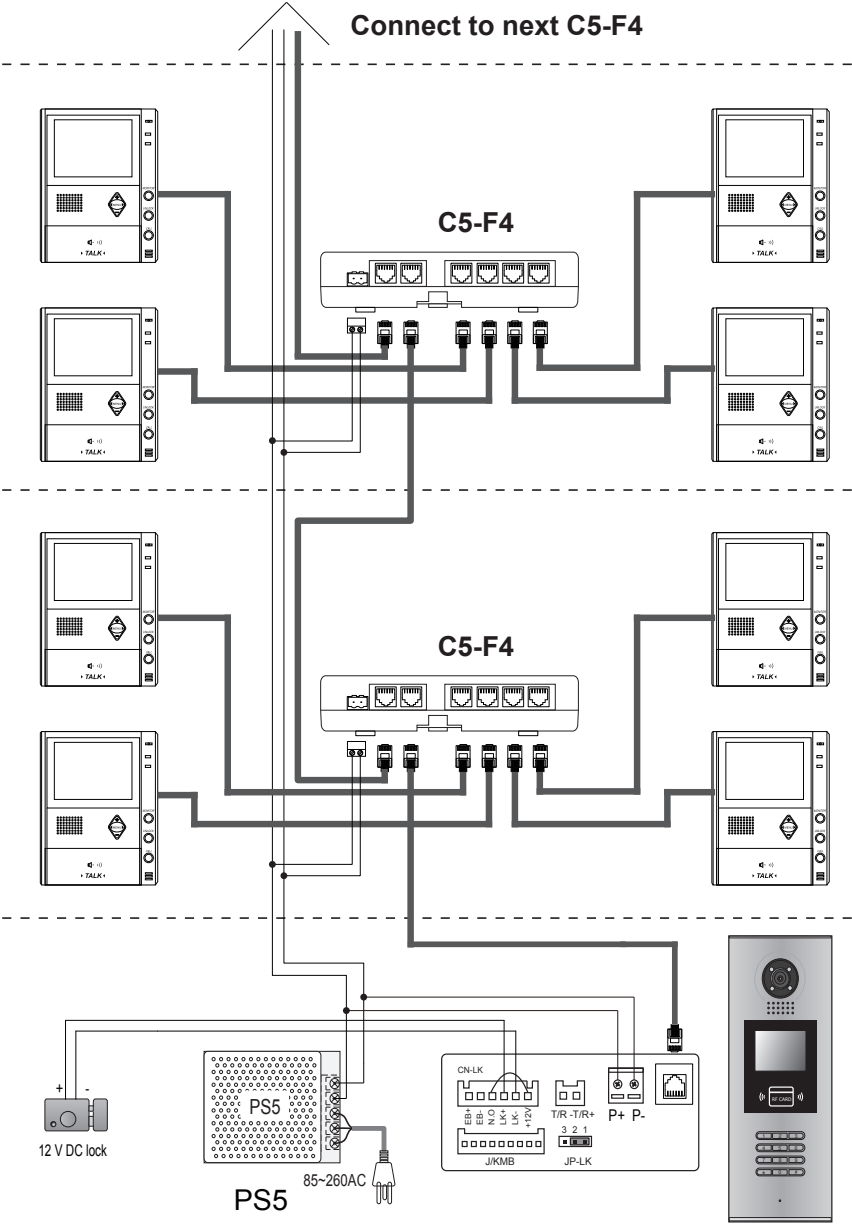
- **+12V:** 12VDC power output.
- **LK-(GND):** Power ground.
- **LK+(COM):** Common contact of the Relay .
- **NO.:** Normally open contact of the Relay (Can be set to be normally closed)
- **EB+:** Exit button connection port.(Short EB+&EB- to unlock)
- **EB-:** Exit button connection port.
- **JP-LK:** For electronic lock safety type setting(refer to Door Station Lock Connections).
- **T/R-:** USB-RS485 communication terminal negative.
- **T/R+:** USB-RS485 communication terminal positive.
- **JWP(P+,P-):** Power input for door station
- **JWB(OUT):** BUS Output(Including Data, audio and video signal)
- **SD Card Slot:** for updating the language and UI of door station

# 3.Door Station Mounting



# 4. Basic System Connection

The basic system consists of: Door station, Distributor, Monitor, Power supply and lock.



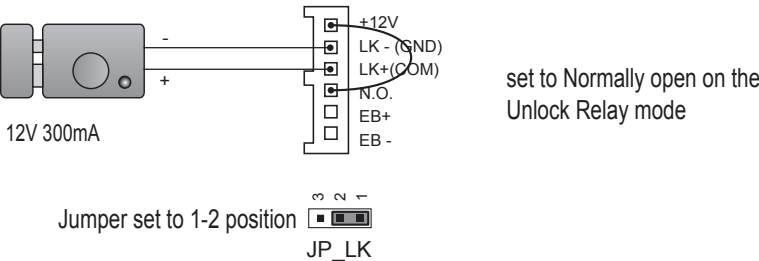
# 5. Door Lock Connections

## 1. Internal Power Supply Mode

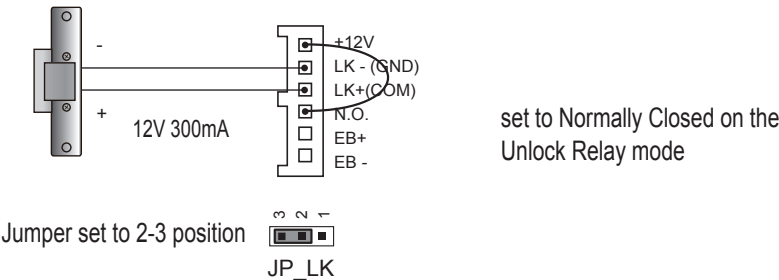
Use the internal power to supply for the electronic lock, so that the lock can be connected to the door station directly. Note that the door station can only output 12Vdc power, Any high-power lock should use external power connection or it might cause damage to the door station.

- The rated power of the lock must be less than 12Vdc 300mA when using internal power supply mode
- The GND must connect to the negative of the lock, and the COM connect to the positive .
- Jumper set to 1-2 position for Power-on-to-Unlock safety type(*Normally open mode*); set to 2-3 position for Power-off-to -Unlock type(*Normally closed mode* ).
- If different unlocking time is needed to be configured, change the *Unlock Timing* on door station.

### A. Connection for Power-on-to-Unlock type:



### B. Connection for Power--off-to-Unlock type:

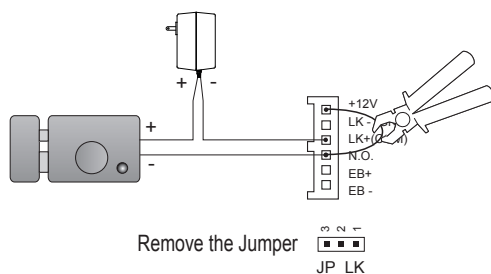


## 2. External Power Supply Mode

When the electronic lock is over 12 Vdc, additional power supply for the lock is needed.

- The power supply for the lock must be less than 48Vdc 1.5A.
- The Jumper must be removed when using external power supply. The default setting is Power-on-to-Lock type(*Normally open mode*), if use Power-off-to-Lock type, change the Unlock Relay mode to *Normally closed mode* .
- If different unlocking time is needed to be configured, change the *Unlock Timing* on door station.

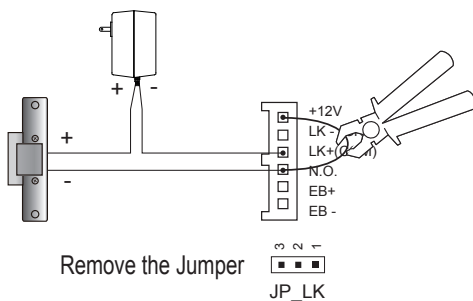
### C. Connection for Power-to-Unlock type:



set to Normally Open on the Unlock Relay mode (default)

Note: Cut off this line when using external power supply

### D. Connection for Power-off-to-Unlock type:



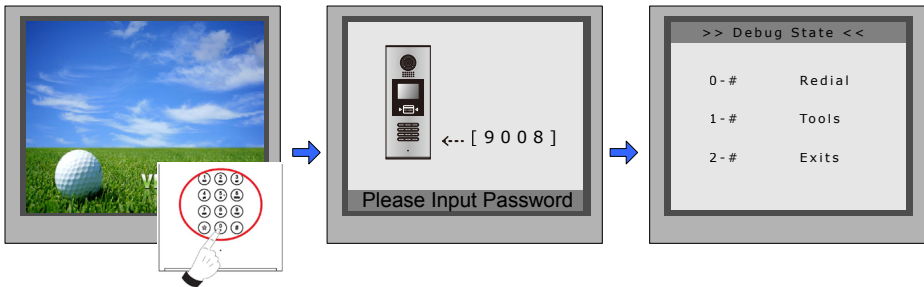
set to Normally Closed on the Unlock Relay mode

Note: Cut off this line when using external power supply

# 6. Door Station Configurations

## About Debug State:

The Debug State is your starting point for using all the applications. To open the debug state, please refer to the following steps:



When Door Station is in standby, press '#' key

Input '9008', then input the Admin Code.(66666666 by default)

Debug State menu is launched

Press "2#" key to exit out the debug state.

## About Debug Tools:

During working at Debug State, press "1#" to enter tools page, Debug Tools overview is shown as below:

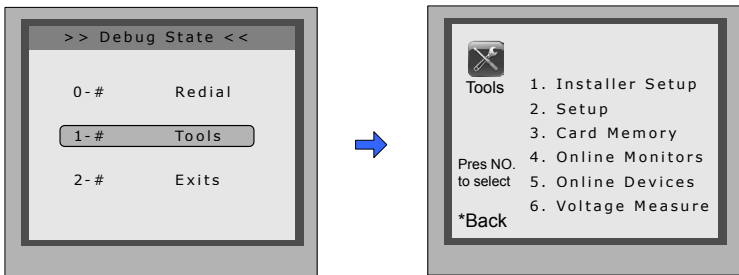




Table 1:Menu overview

Item	Submenu
<b>1. Installer Setup</b>	1. ID Code [0] 2. Unlock Timing [05] 3. Unlock Output [0] 4. Card Memory [0] 5. Doorplate Mode 6. Audio Options ... 7. Parameters ... 8. Installer Code ... 9. Default ...
<b>2. Setup</b>	1. Language [1] 2. Tone Select [03] 3. Tone Volume [08] 4. Unlock Code [1111] 5. Display Mode 6. Clock ... 7. Setup Code ... 8. About ... 9. Default ...
<b>3. Card Manage</b>	1. Add Card ... 2. Delete By Card 3. Delete By M.code 4. Cards Information 5. Format
<b>4. Online Monitors</b>	To search the online monitors, input the starting number and ending number, the door station Will search all the monitors in between one by one

## Basic Tools Detail:

Table 2(Installer Setup):

Item	Description	Factory set
ID Code	1.When there is only one door station and no C5-IPC, set to 0. And set the type of distributor used with it. When C5-IPC is connected, must not be set to 0. 2. When C5-MDS is connected, be set to from 1~8 according to which port it is connected on the C5-MDS 3. When used as common door station, set to 9	[0-11] Standalone Used with C5-F4
Unlock Timing	To set the time that how long the door keeps open when door is released. Range from 01 to 99 seconds.	[05] 5 seconds
Unlock Output	To set the unlock mode to match the corresponding lock.Range from 0 to 1. 0:Power-on-to-Unlock Mode(Normally Open Mode) 1:Power-off-to-Unlock Mode(Normally Closed Mode)	0
Card Memory	To choose to use the memory of door station or that of C5-IPC when access cards are in use 0-Use memory of DS for access 1-Use C5-IPC for access	0
Doorplate Mode	To choose the input mode when you call monitor. It can be set to from 1 to 8 digits. totally 8 numbers or 8 letters or mixed are available	4 digits
Audio Options ...	To set the audio match if there is audio problem caused by bad match. 1. audio match between door station and monitor 2. audio match between door station and guard unit	0
Parameters ...	To show the parameters,please refer to table 2.1	
Installer Code ...	To change door station administrator code	[66666666]
Default ...	To retrieve the original configuration of door station. Note this operation is an irreversible operation. Once restore is done, the parameters including Installer Code and Setup Code will return to factory default	

Table 2.1(Parameters):

Item	Description	Factory set
Monitor Timing	To show the monitor time,Range from 6s to 600s	30s
Switch Timing	Reserve	---
Wait Timing	To show the time during which the door station keeps calling, when door station is making a call, ranging from 10s to 600s	30s
Talk Timing	To show time available for the conversation when door station is talking, ranging from 10s to 600s	90s
Monitor & Speak	To enable Indoor Monitor under monitoring state can speak to Door Station at same time. If set to 1, talk enabled; set to 0, disabled.	[1]
Monitor & Unlock	To enable Monitors under monitoring state can open the door at the same time.If set to 0, unlock function is disabled; Set to 1, unlock is enable;Set to 2,unlock is enable and close at once;Set to 3,unlock is enable and close in 5s.	[1]
Ring Numbers	To show ring times when door station calls monitor.4 options for choice. If set to 0, ring once. If set to 1,ring twice. If set to 2, ring three times.If set to 3,cycle ring	[1]
Name List Mode	To show the namelist display mode.If set to 0,it's the ST-Config display mode.If set to 1,it's the Simulate display mode	[0]
Working Mode	Reserve	---
Input Mode	To show the input type when door station makes a call	[****1111]

**Note:** this section is set on ST-Config software,for more detail informations,please refer to the ST-Config software user instructions.

Table 3(Setup):

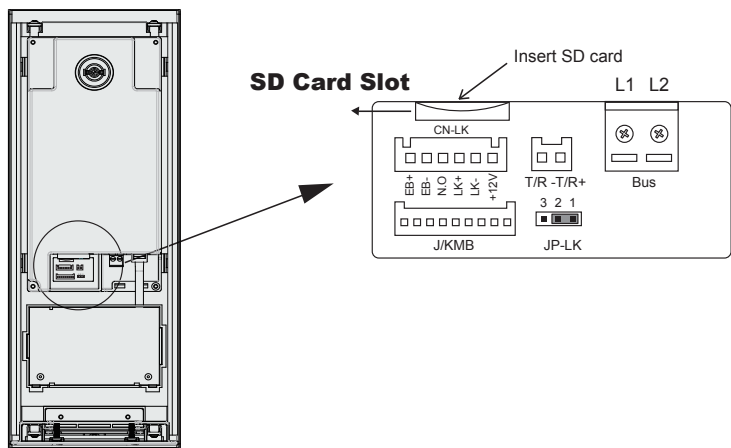
Item	Description	Factory set
Language	To change language.the code format is 4 digits.Please refer to section 7(Language and UI updateing) for more detail informations.	01
Tone Select	Select the chime of Door Station in calling wait state, 12 chord tunes are available, key in 01 to 12 to select.	03
Tone Volume	Adjust the tone volume for dooor station in calling.Range from 01~15	08
Unlock Code	To change unlock code in Common Code Unlock mode, in 4-digits format. 1111 is the default unlock code.	[1111]
Display Mode	To select the Door Station screen menu .If set to 0,the screen displays the visitor's image when talking.If set to 1,the screen displays icons when talking.	[0]
Clock ...	To set date and time. Date format:if set to 0,date format is DD/MM/YY;if set to 1,date format is MM/DD/YY. Time format: if set to 0,time format is 24 hour standard.If set to 1,time format is12 hour standard.	
Setup Code	To change the Program Code.	[88888888]
About ...	1. Hardware version---To show the Door Station(including ACS) hardware information 2. Software version ---To show the Door Station(including ACS) software information 3. Manufacture Date---To show the manufacturing date 4. Dialing Counts---To show the call operation counts 5. Calls Counts---To show the established calling counts 6. Unlock Counts---To show the unlock operation counts 7. Standby Voltage---To show the voltage that the door station in standby. 8. Working Voltage---To show the voltage that the door station in working. 9. Video Standard---PAL or NTSC standard 10. UI_CODE---To show the UI byte counts and check box 11. MCM-VER---To show the version and language for MCM 12. Updated---To show the updated time for UI	
Default ...	Restore all Setup parameters to factory default setting,Please note that this operation is an irreversible	

Table 4(Card Manage):

Item	Description	Factory set
Add Card ...	To add user cards, input the room code and then swipe the card to be added	-
Delete By Card	To swipe the card to be deleted	-
Delete By M.code	To delete the card by room code. Input the room code, and all the cards attached to it will be deleted	-
Cards Information	To show the amount of cards added To count how many times cards are swiped	-
Format	To delete all the cards and count information	-

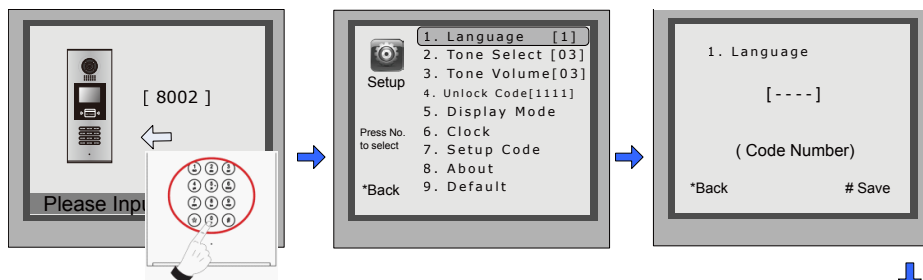
## 7. Language and UI updating

It's convenient for user to change the language and UI. Just put the config files to the SD card and insert the SD card into door station and by means of the digital keypad ,only 30 seconds is needed to update.



Step 1: Insert the SD card which is contained config files into the SD card slot where is at the back of the door station. Refer to the right diagram.

Step 2: If door station runs as Debug State, you can press “1#” to activate Tools Menu, select “2” to enter setup page, then select 1 item. If it runs as Normal State, follow these steps:



Press “#”, Input “8002”, then input Setup Code or Admin Code

Press 1

Input 4 digits code number, Refer to the table.

### Language code number:

8101: English	8107: Portuguese	8113: Russian
8102: French	8108: S-Chinese	8114: Slovakia
8103: Spanish	8109: T-Chinese	8115: Hungary
8104: Italian	8110: Greek	8116: Czech
8105: German	8111: Turkish	... ..
8106: Dutch	8112: Polish	



When the door station output a long sound DI..., that means UI updating is finished.

## 8. Specification

- Power supply: DC 18~21V
- Camera Lens : 1/4 ACS 4T image sensor with DSP processor
- Power consumption: Standby 3W; Working status 7.5W
- Screen: 3.5 inch TFT
- Resolution: 320(R, G, B)X240 pixels
- Video signal: CCIR/EIA Optional
- Wiring: Cat5

# WARRANTY CARD

NB Please keep this document safe, as it is proof of your Warranty  
Your Video door system comes with a one year Manufacturers Warranty. When used normally, the following services are offered:

1. Replacement for malfunctioning parts in first three months
2. Repair free of charge for malfunctioning parts in first year

The following actions will void the Warranty:

1. Damage to the device during installation
2. Damage to the device through misuse
3. Opening and/or disassembling the device
4. Attempting to force the device to perform functions for which it is not intended
5. Attaching the device to power supplies other than those recommended by the manufacturer

Distributor for Warranty purposes:

Intelligent Home Online Ltd

62 Hartley Old Road

Purley, Surrey

CR8 4HJ

+44 (0)20 86170015

[www.intelligenthomeonline.com](http://www.intelligenthomeonline.com)

Product: \_\_\_\_\_

Purchaser Name: \_\_\_\_\_

Invoice N: \_\_\_\_\_

Purchase Date \_\_\_\_\_

